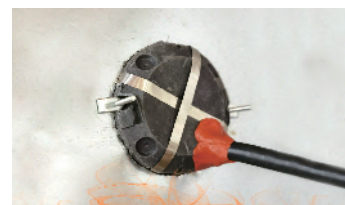


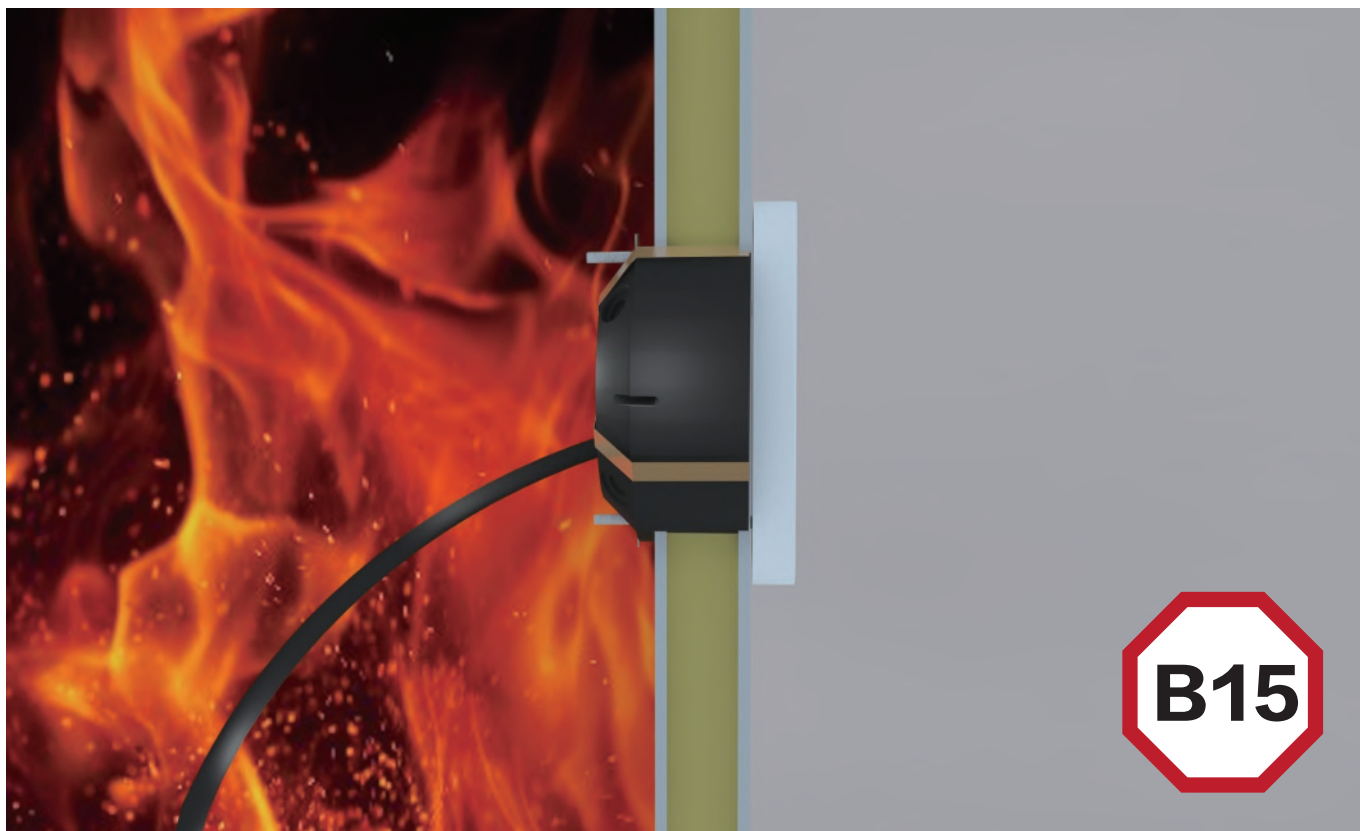


B15



HK-100/200 TYPE CLASS B15 CABIN PANEL FIRESTOP SEALING SYSTEM

HK-100/200 TYPE CLASS B15 CABIN PANEL FIRESTOP SEALING SYSTEM



HK-100 Type Class B15 Cable Conduit



Packing and Storage

Packing: 16cm × 16cm × 8cm
 Φ 20/15: 30pcs/box
 Φ 14/8: 50pcs/box
 Storage condition: dry and indoor

HK-200 Type Class B15 Cavity Wall Box



Packing and Storage

Packing: 8.5cm × 8.5cm × 4.5cm
 Storage condition: dry and indoor

Diameter of installation opening

HK-100 cable conduit specification	Diameter of panel opening	Cable O.D.
Φ 20/15	Φ 24-Φ 19	Φ 20-Φ 15
Φ 14/8	Φ 18-Φ 12	Φ 14-Φ 6



The standard installation opening of HK-200 type Class B15 cavity wall box is Ø 74.



HK-100 type class B15 cable conduits are easily and quickly fitted. It has good firestop sealing performance. In the case of high temperature and fire, the cable conduit will rapidly expand to form a flame-retardant carbon layer, to seal the gap between the bulkhead panel and cable. Therefore, it can effectively prevent the spread of temperature, flames and toxic gases.

HK-200 type class B15 cavity wall box is applied for class B15 bulkhead panel in shipbuilding, with an excellent fire-protection function. As a cavity wall box, it can block the fire and smoke in the fire-protection zone and prevent them from spreading to other cabins, and to improve the safety of the ship.

HK-300 type class B15 firestop putty pad has the excellent fireproof sealing performance. It can provide fire-protection when cabin cables, switches and sockets pass through class B15 bulkhead panel as the firestop sealing material to seal the gaps, ensuring the integrity of class B15 fire division firestop and sealing. At the same time, it has both moisture and sound insulation function.

HK-300 Type Class B15 Firestop Putty Pad

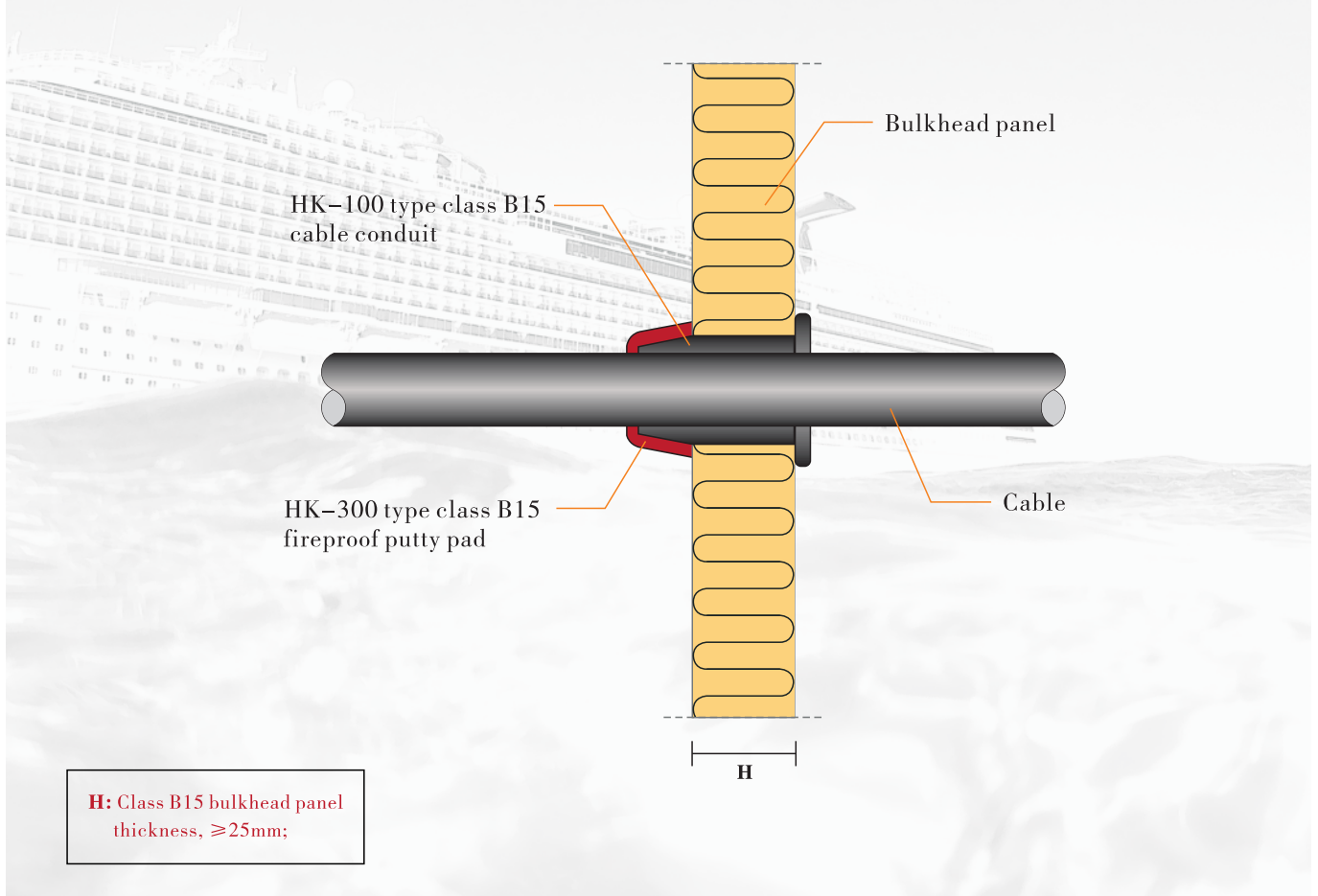
Packing and Storage

Packing size: 200mm × 200mm × 4mm/pc;

Storage condition: dry and indoor



HK-100 Type Class B15 Cable Transit Construction



HK-100 type Class B15 cable conduit:

Seal the gap between cable and bulkhead panel, with $\Phi 20/15$, $\Phi 14/8$ specifications;

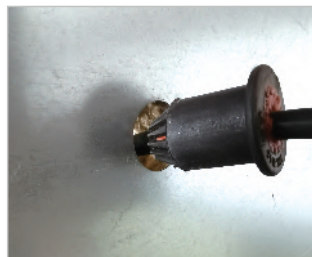
Cable:

Multi cable transit (network cables), cable diameter: $\Phi 6$; Single cable transit, Cable diameter from $\Phi 8$ to $\Phi 20$.

HK-100 Type Class B15 Cable Transit Installation



Step①: Open a fitted hole on class B15 bulkhead panel to install the cable and conduit, according to specifications of cable and cable conduit.



Step②: choose right size HK-100 cable conduits to match cables with different diameter;

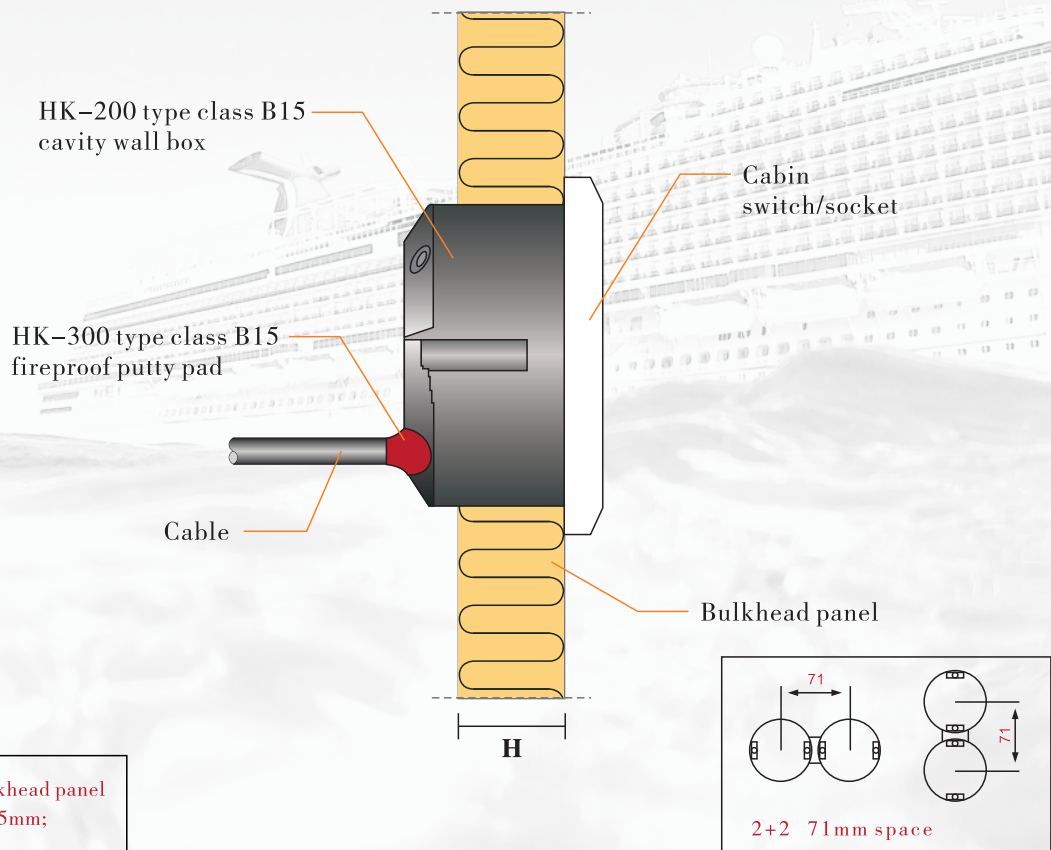


Step③: Wrap the cable with the right size cable conduit, and fix the cable conduit to the bulkhead panel passing through the panel hole.



Step④: HK-300 type class B15 firestop putty pad is wrapped on the exposed side of cable conduit, to seal the gap between cable and cable conduit, cable conduit and panel.

HK-200 Type Class B15 Cavity Wall Box Penetration Construction



HK-200 type Class B15 cavity wall box :

As the class B15 cabin switches and socket fire protection device, It can effectively prevent the flame from spreading at different cabins ;

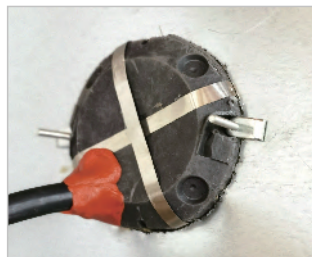
Cable:

Pass through the cabin panel and connect with cabin switch and socket.

HK-200 Type Class B15 Cavity Wall Box Penetration Installation



Step①: Open a fitted hole on class B15 bulkhead panel to install HK-200 type class B15 cavity wall box.



Step②: Open the fitted hole on the bottom of HK-200 type class B15 cavity wall box, the cable pass through the hole to connect with the cabin switch or socket;



Step③: Insert the socket or switch into the cavity wall box, and fix the socket or switch on the class B15 wall panel with rivets or screws, and then put on the socket or switch panel.



* In a fire, the volume of HK-200 type class B15 cavity wall box will expand quickly to provide the fire from spreading to different cabins.



Huoke WeChat public account

Shanghai Huoke New Material Co., Ltd

Add: No.135 Guowei Road, Yangpu District, Shanghai (Shanghai New Materials Science Park)

Tel: 021-66308119 Mobile: 15921218885

Fax: 021-66308119

E-mail: chendongliang@shhuoke.com

www.shhuoke.com

* The company reserves the right of final interpretation of this material. Product design and specifications may be updated. About the latest information, please contact the sellers to confirm. All information has been carefully reviewed, and the company is not responsible for the consequences caused by printing errors and omissions. Please kindly understand if any inconvenience.